

Case Study

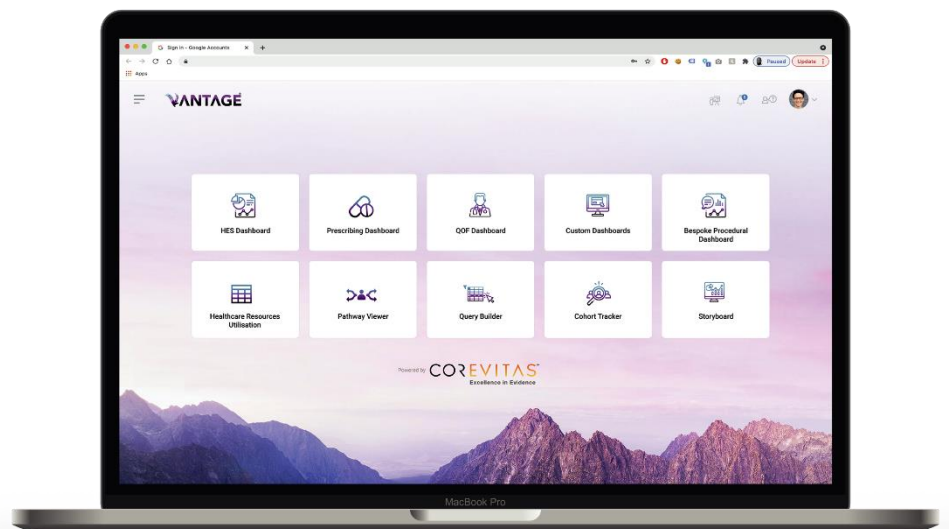
Rotator cuff repairs: How frequently do patients need revisions?

What are the challenges?

- To gain clarity around how many patients need revisions after a rotator cuff repair.
- The need to quantify how many patients have open vs laparoscopic surgery, and how their interactions with secondary care post-procedure differ.
- Do patients frequently have complications post-procedure that result in them being admitted?
- Which provider trusts carry out the most repairs and which have the most complications?

How can Vantage be used to support the use of the rotator cuff product?

A company has a product which is used in rotator cuff repair procedures and enables quicker patient recovery. The use of the product reduces the likelihood for additional revisions or complications.



Get in touch:

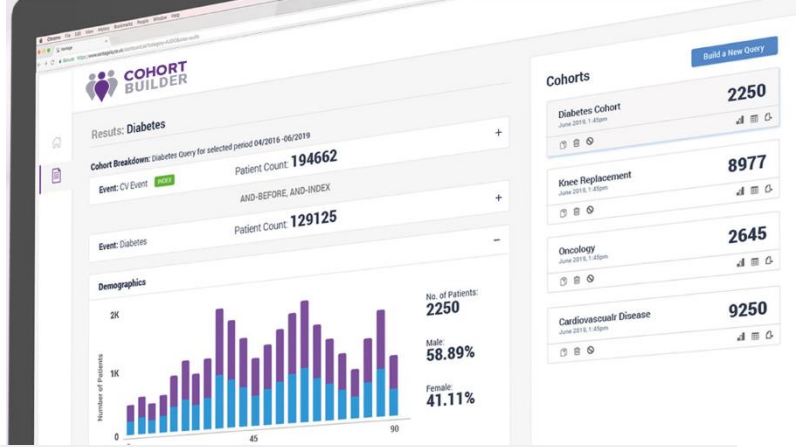
+44 (0)20 4534 3418

info@corevitas.com

www.corevitas.com

Building Cohorts

Utilising Hospital Episode Statistics (HES), Vantage allowed the company to create a number of iterations of patients cohorts:



Patients with OPCS Procedural Codes:

Utilising Hospital Episode Statistics (HES), Vantage allowed the company to create a number of iterations of patients cohorts:

T791 Plastic repair of rotator cuff of shoulder NEC

T794 Plastic repair of multiple tears of rotator cuff of shoulder

Volume within HES:

64,660

Open versus Arthroscopic:

Layering the inclusion and exclusion of Y767 Arthroscopic approach to joint

86% minimally invasive

14% open operations

The company utilised Vantage to quantitatively measure the volumes of revisions. This enabled them to effectively engage HCPs with robust evidence to support an improved patient pathway, resulting in better healthcare within this therapy area. - NHS Partnership Manager (Top 10 Life Science company)

Tracking Cohorts

The company used Vantage filters to look 12 months post Rotator Cuff Repair. With over 250+ fields and measures, they managed to answer the following questions. Vantage supports this by utilising the encrypted HES ID for patients.

Cohorts

Selected Cohort: Rotator Cuff Repairs



- Volume of Rotator Cuff Repairs needing revisions?
- Are volumes of revisions higher when the repair is open or arthroscopic?
- Are patients followed up in an Inpatient or Outpatient setting for a post-op MRI within 12 months?
- What are the volumes of patients that have complications such as infection or bleeding that lead them to non-elective care?
- What does Rotator Cuff Repair look like nationally, regionally, by ICS, or Provider Trust?
- Are there certain demographics that are more likely to have repairs or revisions?
- Are there more revisions happening in certain regions?
- Quantify the costs that Provider Trusts are reimbursed for this care?